

Profile Testing Report

Jack Desmond

31 October 2022

06:59 pm

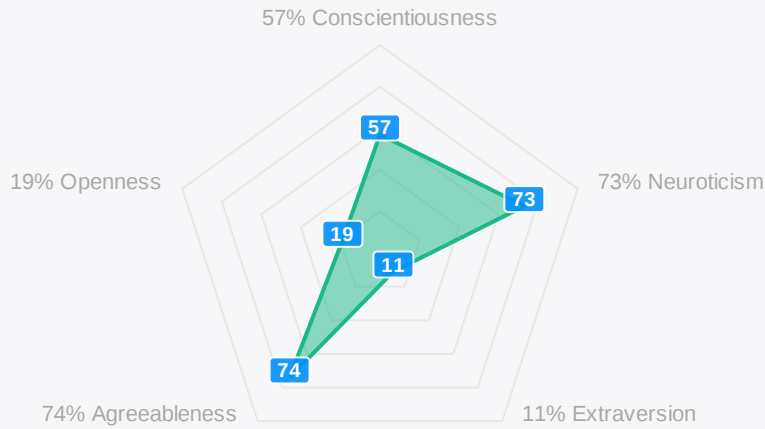
Culture Fit	1
Psychometric Assessment	2
Aptitude	3
Learning Style	4
Career Matches	5

Archetype **Translator**

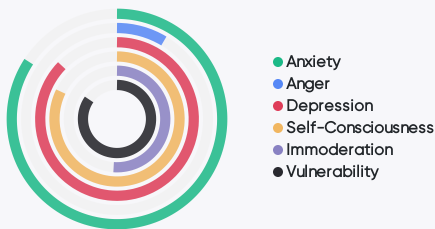
Translators are an essential component of the team because they are able to discuss and understand the ideas of the creative and translate them into executable action for the Doer. Translators are typically high in agreeableness, altruism and cooperation, but also tend to not have extremes in any of the psychometric assessment metrics. The percentage of Translators required within a team is typically stable irrespective of its maturity stage as their key role is to understand the premise and intent of an idea, process or function, and identify executable actions. Translators also typically have a contrasting disposition to the Creative which enables them to articulate an idea in a different way that is often more understandable to the individual(s) who will be executing. Due to their nature, translators are often able to fill the role of a doer or creative in lieu of these types within a team.



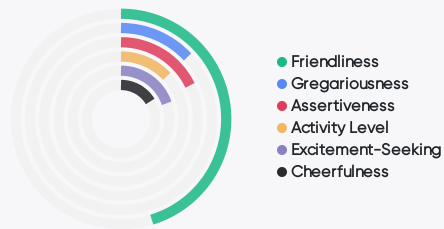
Culture Fit Results



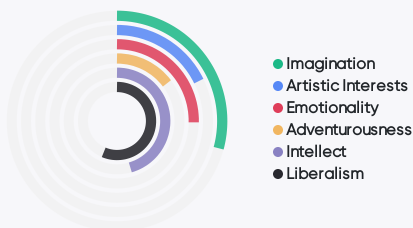
Neuroticism



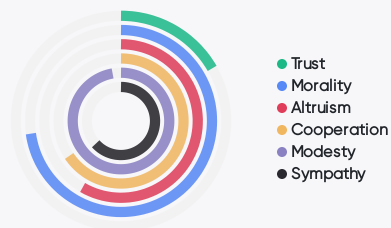
Extraversion



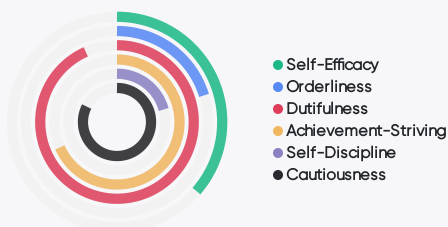
Openness To Experience



Agreeableness



Conscientiousness



Your Personality Type is SC-Style

A person with the CS or SC personality type gravitates towards formal structure and processes, and builds a few deep, trusting relationships instead of a wide circle of acquaintances. They are usually happy to take a supporting or analytical role while someone else takes the lead and sits at the center of attention.



Personality

CS/SC-personalities are naturally reserved, patient individuals. They enjoy listening to others, and are calm and rational with their responses. They do their best to avoid conflict, exhibiting a rather passive style when it comes to confrontation. Although they are not outwardly assertive, they are very understanding of personal and emotional issues.

Motivations

CS/SC-personalities are motivated by stability and predictability, always seeking work that is void of interruptions or distractions from the task itself. Security and loyalty are also very important to them, in that they want to be certain their work conforms to the expectations of others. They value accuracy and precision, but are fortunate enough to have the patience to meet these standards.

Communication

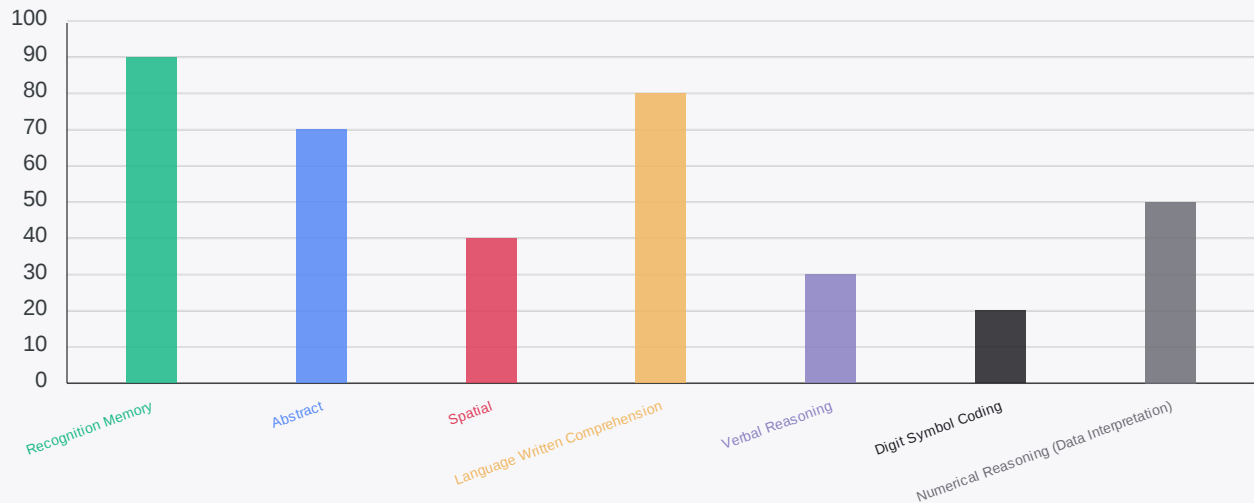
When communicating with a CS/SC-personality speak in a calm and steady tone, ensuring you stay objective and minimize emotionally charged situations. Ask lots of questions and explain your reasoning with details

Under Stress

When met with stress, CS/SC-personalities will overanalyze or withdraw, and may even stop talking altogether. Their generally calm and rational approach to their work -- coupled with their non-assertive style -- makes them appear detached, or potentially passive aggressive.

Aptitude Results

We use weighted variables required for real-world jobs. We test by assessing critical thinking and speed, the ability to solve a problem, analyse information, your ability come up with a course of action, articulate them and decide.



● Recognition Memory

Recognition memory is a subcategory of declarative memory, and is the ability to recognise previously encountered events, objects, or people. The ability to distinguish between novel and familiar objects or places is central to the ability to recall day-to-day events or plan future behaviours.

Potential Careers: Medical Fields, Teacher, Engineer, Technician.

● Spatial

Spatial reasoning is the ability to comprehend three-dimensional images and shapes. This is a primary function of the right side of the brain and is used when solving puzzles, figuring out maps and taking part in any type of construction or engineering project.

Potential Careers: Engineering, Design, Medical Fields.

● Verbal Reasoning

Verbal reasoning assesses a person's ability to understand, analyse, and interpret written information. The questions measure verbal analytic skills, your ability to understand analogies, identify critical information and logically derive conclusions from written facts or data.

Potential Careers: Sales, Business Analyst, Learning and Development, Change Manager.

● Numerical Reasoning (Data Interpretation)

Numerical reasoning measures the ability to interpret, analyse, and draw logical conclusions based on numerical facts and figures. Data interpretation requires the analysis of scientific and numerical charts, tables and graphs. This test assess the ability to perform analysis on a given data set and recognize patterns in the data.

Potential Careers: Data Science, Analyst, Engineering.

● Abstract

Abstract reasoning measures the ability to identify and interpret the rules and patterns in order to find a solve a problem, such as identifying the missing object. Abstract reasoning is the best indicator of fluid intelligence and the ability to learn new things quickly. This is the purest form of mental ability and is least affected by previous education and achievement.

Potential Careers: Medical Fields, Engineer, Cyber Analyst, Designer.

● Language Written Comprehension

Language usage test measures the ability to detect errors in grammar, punctuation, and capitalization. The questions assess the ability to read and comprehend written information quickly. Language usage predicts success in positions where written language ability is essential.

Potential Careers: Editor, Lawyer, Consultant, Teacher.

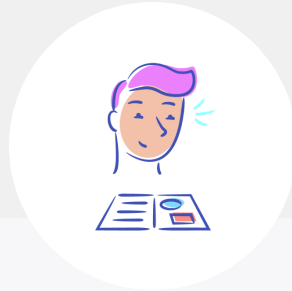
● Digit Symbol Coding

The Digit symbol test assesses the ability to learn a new coding system and using it in context. Digit symbol coding assess skills related to information encoding and decoding, abstract reasoning and sequencing. The test requires participants to understand the logic behind the coding pattern and then apply this logic to find answers.

Potential Careers: Programming, Data Analyst, Engineering, Information Technology.

Your Learning Style is **Intrapersonal**

If you have a solitary style, you are more private, introspective and independent. You can concentrate well, focusing your thoughts and feelings on your current topic. You are aware of your own thinking, and you may analyze the different ways you think and feel.



You spend time on self-analysis, and often reflect on past events and the way you approached them. You take time to ponder and assess your own accomplishments or challenges. You feel that you know yourself. You think independently, and you know your mind. You may have attended self-development workshops, read self-help books or used other methods to develop a deeper understanding of yourself.

You prefer to work on problems by retreating to somewhere quiet and working through possible solutions. You may sometimes spend too much time trying to solve a problem that you could more easily solve by talking to someone.

Common pursuits and phrases

Those that have a strong solitary style include authors, researchers, park rangers and security guards. Peak performers in any field often have a good solitary style. Here are some phrases you may use:

- This is what I think or feel about that.
- I'd like to get away from everyone for a while.
- I'll get back to you on that.

Learning and techniques

You prefer to learn alone using self-study. When you spend time with an instructor or a teacher, you often only clarify information you haven't be able to clarify yourself. You may dislike learning in groups.

Don't be afraid to ask questions like 'What's in this for me?' 'Why does this matter?', 'How can I use this idea?' Be aware of your inner thoughts and feeling towards various topics. This is because these inner thoughts have more of an impact on your motivation and ability to learn than they do in the other styles.

- Set your goals, objectives and plans. Define ultra-clear visualizations of what life is like once you've achieved your goals. Understand your reasons for undertaking each objective.
- Align your goals and objectives with personal beliefs and values. If there is misalignment, you may run into issues with motivation or confidence.
- Create a personal interest in your topics. You may want to look at the people behind your books or material. What was their motivation to create it? Can you ask them?
- Keep a log or journal. Include extra information about your thoughts and feelings. While you are studying, be aware of challenges, what works well and doesn't work well for you. Write them down and come back to them. It may be more efficient to put something that confuses you aside, and ask others later. This is often better than spending too much time trying to work it out yourself.

Top Career Matches

The below recommendations are the areas that we believe you would best suited for, based on market opportunity and your test results.

PMO Assurance Officer

PMO Assurance Officers assess and report on the delivery of projects, portfolios and programs to ensure that their expected value will be delivered.

Senior Intrusion Analyst

Intrusion Analysts identify, track and discover sophisticated malicious cyber activity targeting Australian Government systems and networks.

Research Librarian

Research Librarians assist researchers to find materials and provide them with advice on how to perform research related to their topic. Research Librarians also curate an organisation's research collection and advise on the use of technology in managing that collection.

Value Manager

Value Managers identify, plan, measure and track the value (benefits) expected from a projects and programs.